

1M CHANNEL & ACCESSORIES WITH DUAL COATED STEEL GRATE

Products covered in this spec sheet are as listed below:

Product	Code	Class	Weight	Flow	Slip Rating	Slot Width
2 Pack	83923	A	8kg	437 (L/min per meter)	P3	8mm
3 Pack	83933	A	12kg	437 (L/min per meter)	P3	8mm
1M (100mm)	83911	A	4kg	437 (L/min per meter)	P3	8mm
3M (100mm)	83931	A	12kg	437 (L/min per meter)	P3	8mm
Corner (100mm)	83941	A	1.3kg	437 (L/min per meter)	P3	8mm

Material

Electrophoretic deposition and metallic fluorocarbon dual coating, installed in a recycled polymer channel.

Suitable Applications

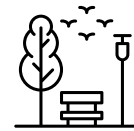


LOW-MED RAINFALL



DRIVEWAY

*When installed in concrete



OUTDOOR

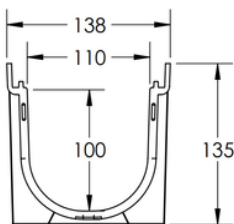
Warranty

Polymer 5 Years

Steel Grate 1 Year

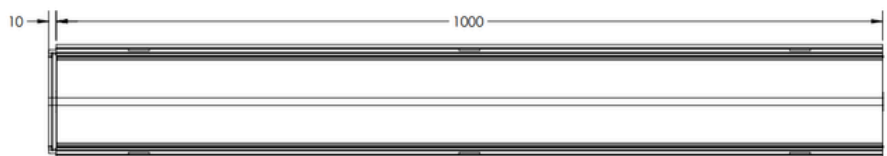
Product Drawing

100MM PROFILE

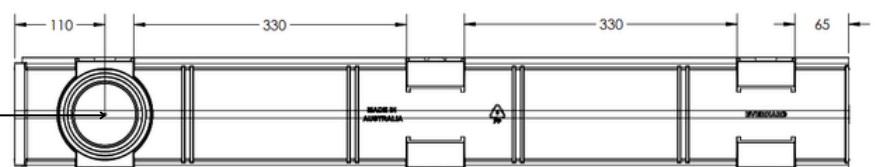


90 & 100MM PIPE CONNECTIONS

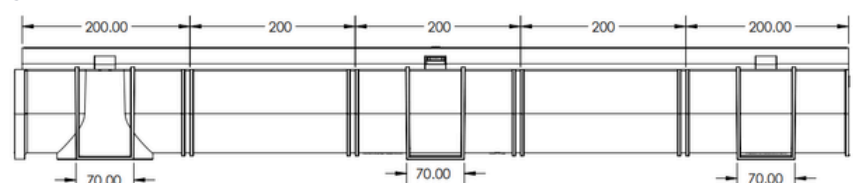
TOP



BOTTOM



SIDE



Disclaimer: All measurement are in millimetres and are solely for reference purposes. Colours have been reproduced with as much accuracy as possible. Any changes resulting from technical advance of design or colour may be made without prior notice. Further information on warranties is available at www.everhard.com.au