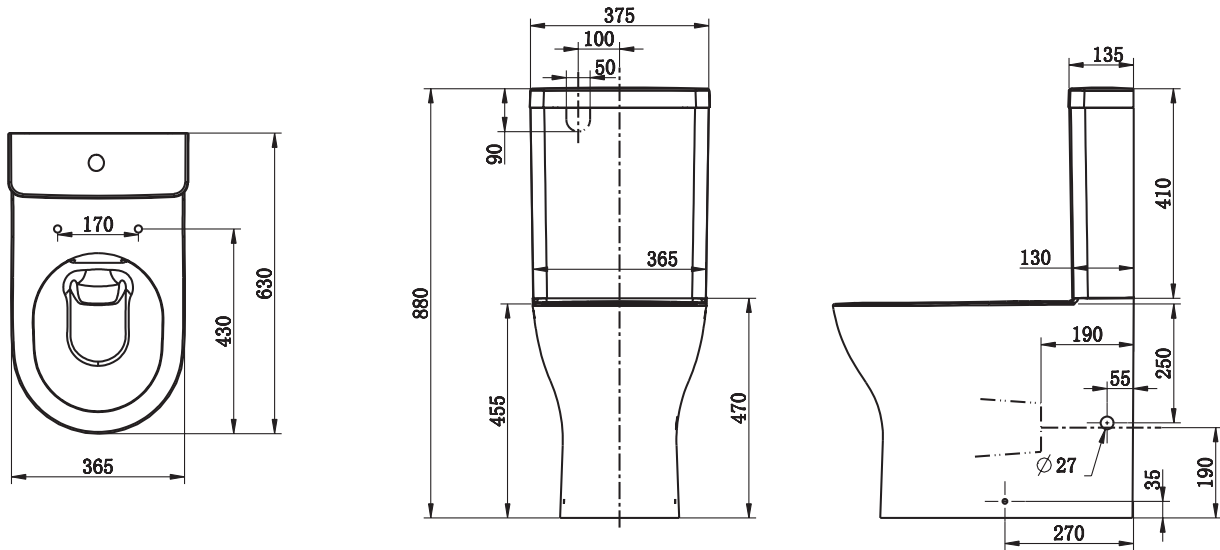


PLEASE NOTE

Everhard recommends that the Nugleam Contour Wall Faced Toilet Suite is not to be installed using an offset pan connector when using the connector to install the pan as this may cause flushing and performance issues. Pan connector supplied with the pan will provide a range of 90mm-180mm



STEP 1

Rough in the position for the waste outlet and floor fixing brackets. Ensure that the water inlet connection is not obstructed by the toilet pan when setting up for bottom inlet water supply. For back inlet water supply, check the measurements for rough in as per the drawings provided. A Back Inlet Conversion Kit is required for back inlet water supply

STEP 2: S TRAP INSTALLATION

- Lubricate the rubber fins of the pan bend and position it within the waste pipe at the correct height
- Fix the pan connector back to the wall using the screw fitting and collar (The screw fitting needs to be cut down to size so that the pan connector is fixed in the vertical position)
- Remove the plastic cover and rubber from the front of the pan connector
- Cut the front of the pan connector down to the required length to suit the distance between the outlet pipe and the spigot on the pan
- Take care to ensure the cut is even and straight
- Lubricate the rubber then place the plastic collar onto the pan connector

STEP 2: P TRAP INSTALLATION

- Set up the waste pipe to that the end of the pan collar extends 235mm from the finished wall. The height from the finished floor level for the outlet pipe through the wall is to be 190mm centre
- Glue the Pan connector onto the outlet pipe. (Do not use an offset pan connector for P Trap installations)

STEP 3: INSTALLATION OF THE PAN

- Using the cistern fixing kit supplied, remove the white plastic nut and threaded plug from the stainless steel screw
- Insert the white plastic threaded plug into the cistern fixing hole located on the pan
- From underneath, screw the white plastic nut onto the white plastic threaded plug and tighten by hand



- Align and push the pan back to the wall, connecting the pan spigot into the pan connector
- Bucket flush the pan to test for leaks prior to fixing pan to the floor
- Ensure the pan is level and flush against the wall, make minor adjustments where necessary. Fix the pan to the floor using the screws and caps provided
- Silicone the pan to the floor and remove any excess sealant
- Insert plastic plugs supplied into the hole on the side of the pan which is not used for the water supply

STEP 4: INSTALLATION OF THE CISTERN

- Place the foam coupling seal into the pan recess (do not use silicone)



FOR BOTTOM INLET CONNECTION

- Using a flexible stainless steel hose (not supplied), connect to the inlet fitting of the inlet valve on the underside of the cistern and feed the flexible stainless steel hose through the hole located on the side of the pan
- Place the cistern onto the pan and line up the fixing holes in the base of the cistern with the holes in the pan
- Using the cistern fixing kit provided, ensure that the black rubber and stainless steel washer is located onto the stainless steel bolt



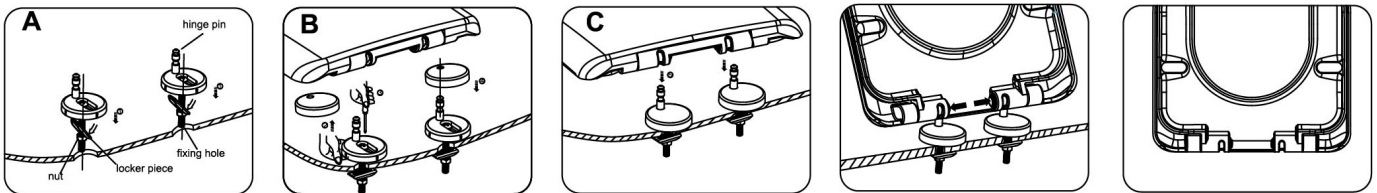
- Place the stainless steel bolt through the cistern fixing holes and tighten into the white plastic threaded plug located on the pan
- Tighten using a long Phillips head screw driver ensuring the rubber seal on the stainless steel bolt is tight against the cistern and the stainless steel washer. (Do not over tighten)
- Prior to connecting the flexible stainless steel hose to the stop cock, ensure the water lines have been flushed. Check for any leaks
- Check the water level is at the correct height inside the cistern after filling.
- Adjust water level where necessary by simply turning the float arm screw in a clockwise or anti-clockwise direction.
- Fit cistern lid and check button operation
- Ensure the water inlet pressure does not exceed 500KPA as per AS/NZS3500 3.3.2

FOR BACK INLET CONNECTION (BACK INLET CONVERSION KIT REQUIRED)

- Attach the stop cock (not supplied) to the ½ BSP thread coming through the back of the cistern
- Remove the current bottom inlet valve installed onto the cistern and insert the plug that is supplied with the back inlet conversion kit
- Attach the side entry inlet valve onto the overflow tube located on the outlet valve. Ensure the float of the valve does not come in contact with the internal walls of the cistern
- Ensure the water lines have been flushed prior to connecting the cistern
- Attach the flexible stainless steel hose (supplied with the back inlet conversion kit) to the side entry inlet valve and the stop cock. Ensure the flexible hose is not submerged in water. Check for any leaks
- Check the water level is at the correct height inside the cistern after filling. Adjust water level where necessary by simply turning the float arm screw in a clockwise or anti-clockwise direction
- Fit cistern lid and check button operation
- Ensure the water inlet pressure does not exceed 500KPA as per AS/NZS3500 3.3.2

STEP 5: INSTALLATION OF THE TOILET SEAT

- Remove the toilet seat fixing kit from the toilet seat carton
- Insert the fixing toilet seat plug into the fixing seat holes located on the pan
- Place the round plastic hinge block onto the pan and insert the stainless steel screw through the hinge block and into the plug located on the pan and tighten using a Phillips head screw driver
- Place the stainless steel cover over the round plastic hinge block
- Install the toilet seat onto the stainless steel hinge pins until it clicks into position
- Ensure the toilet seat is located correctly onto the pan
- Make adjustments where required
- Press the chrome button located on the seat to remove the seat from the pan



For further assistance, please call us on **131 926**