

## 1M CHANNEL & ACCESSORIES WITH POLYMER GRATE

Products covered in this spec sheet are as listed below:

Product	Code	Class	Weight	Flow	Slip Rating	Slot Width
2 Pack	83922	A	4.6kg	819 (L/min per meter)	P1	7.5mm
3 Pack	83932	A	6.9kg	819 (L/min per meter)	P1	7.5mm
1M (50mm)	83812	A	1.4kg	1018 (L/min per meter)	P2	14.5mm
1M (100mm)	83300	A	2.3kg	1018 (L/min per meter)	P2	14.5mm
3M (100mm)	83390	A	4.6kg	1018 (L/min per meter)	P2	14.5mm
Corner (50mm)	83600	A	0.46kg	819 (L/min per meter)	P2	7.5mm
Corner (100mm)	83942	A	0.76kg	819 (L/min per meter)	P2	7.5mm

### Material

Reprocessed Grade A polypropylene, installed in a recycled polymer channel.

### Suitable Applications



LOW-MED RAINFALL



DRIVEWAY



SWIMMING POOL

\*When installed in concrete

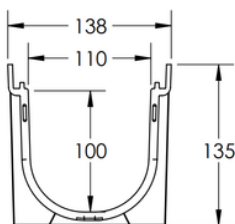
### Warranty

Polymer 5 Years

Polymer Grate 5 Years

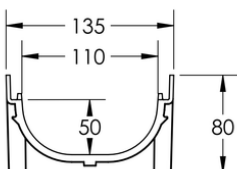
### Product Drawing

#### 100MM PROFILE

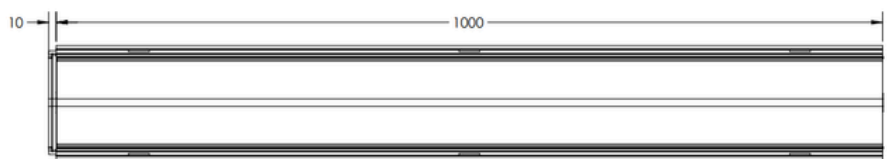


90 & 100MM PIPE CONNECTIONS

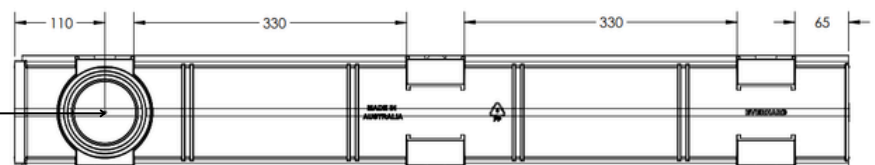
#### 50MM PROFILE



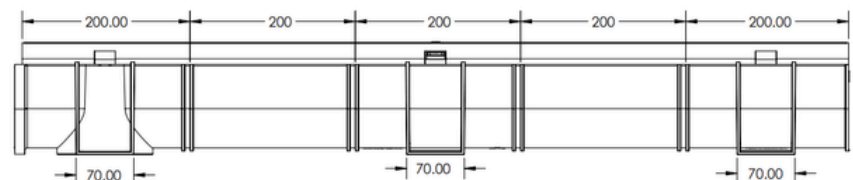
#### TOP



#### BOTTOM



#### SIDE



Disclaimer: All measurement are in millimetres and are solely for reference purposes. Colours have been reproduced with as much accuracy as possible. Any changes resulting from technical advance of design or colour may be made without prior notice. Further information on warranties is available at [www.everhard.com.au](http://www.everhard.com.au)